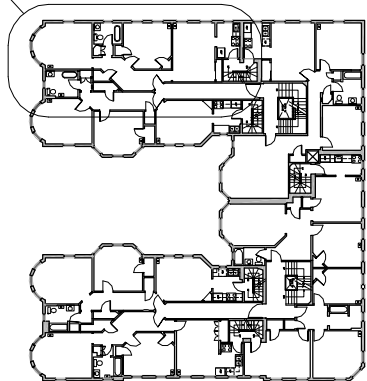


UNIT 59-26
782 SQ.FT.
CEILING, HT.
9'-0" A.F.F.

DINING RC
UNIT 59-
758 SQ.
CEILING,
9'-0" A.F.F.
11.25'

I CERTIFY TO THE BEST OF MY KNOWLEDGE, INFORMATION AND BELIEF THAT THIS PLAN FULLY AND ACCURATELY DEPICTS UNIT 59-26, THE LAYOUT OF THE UNIT, ITS LOCATION, DIMENSIONS, APPROXIMATE AREA, MAIN ENTRANCE AND IMMEDIATE COMMON AREA TO WHICH IT HAS ACCESS, AS BUILT

AREA OF ENLARGED PLAN



KEY PLAN

SCALE: 1" = 50'-0"

SECOND FLOOR PLAN (UNIT 59-26)

SCALE: 3/32" = 1'-0"

PROJECT:

**57-59 MAGAZINE STREET
CONDOMINIUM**
57-59 MAGAZINE STREET
CAMBRIDGE, MA 02139

DRAWN BY:

tm

NUMBER:

2-26

JOB # 04-072

DATE: 1/3/06

CAD FILE:

CRAMER & LEVINE
ARCHITECTS P.A.
134 EAST MAIN STREET
NORTON, MA 02766
TEL (508) 230-2466
FAX (774) 265-1811